



MONTHLY MEMBERSHIP PROGRESS REPORT

District 315B2

Results as of: 9/30/2015

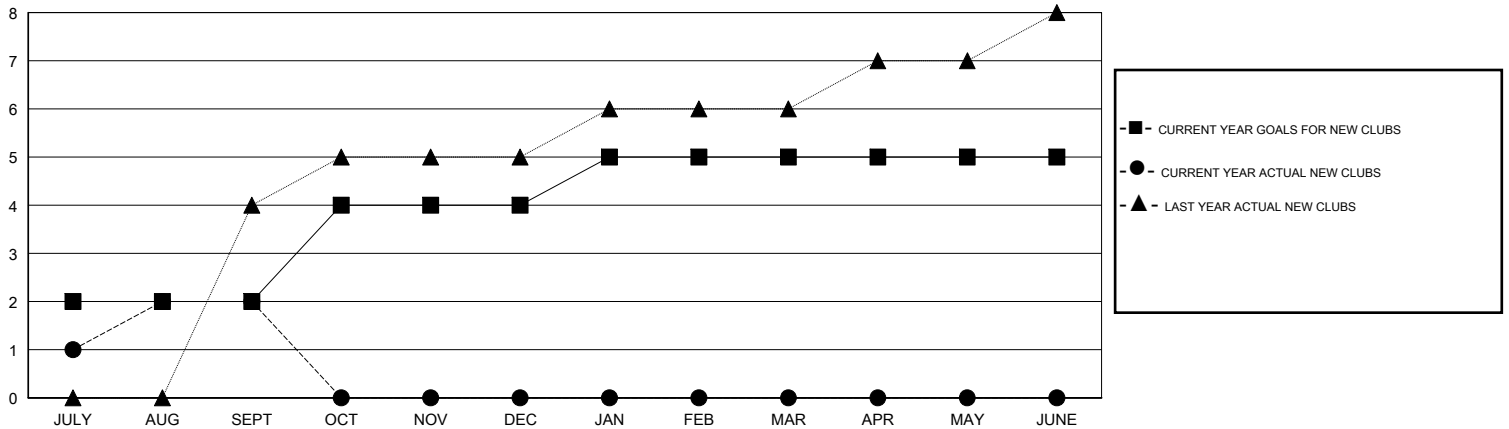
GMT: NAZMUL HAQUE

LOCATION REP OF BANGLADESH

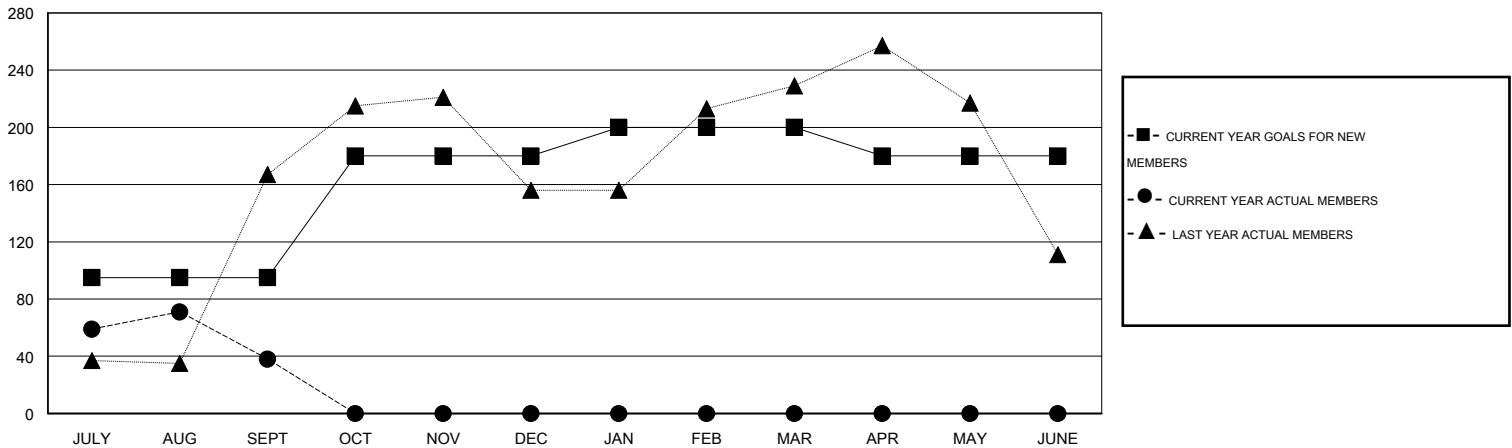
GMT CA 6

Clubs					Members				
RESULTS FOR 2015-2016					RESULTS FOR 2015-2016				
QUARTER	NEW CLUB GOAL	NEW CLUBS	DROPPED CLUBS	NET GAIN/LOSS	QUARTER	NEW MEMBER GOAL	CHARTER AND NEW MEMBERS ADDED	DROPPED MEMBERS	NET GAIN/LOSS
JULY/AUG/SEPT	2	2	0	2	JULY/AUG/SEPT	95	104	66	38
OCT/NOV/DEC	2	0	0	0	OCT/NOV/DEC	85	0	0	0
JAN/FEB/MAR	1	0	0	0	JAN/FEB/MAR	20	0	0	0
APR/MAY/JUNE	0	0	0	0	APR/MAY/JUNE	-20	0	0	0

GOALS AND ACTUAL NEW CLUBS CUMULATIVE



GOALS AND ACTUAL MEMBERS CUMULATIVE



DROPPED CLUBS: 0	18 CLUBS OF 79 ADDED 1 OR MORE NEW MEMBERS	<u>GENDER DISTRIBUTION</u>	
<u>DROPPED MEMBERS</u>		MALE	1,748 (78.70%)
DECEASED	2	FEMALE	473 (21.30%)
CLUB CANCELLED	0	<u>FAMILY UNIT MEMBERS</u> 355 <u>HEAD OF HOUSEHOLD</u> 114 <u>NON-HEAD OF HOUSEHOLD</u> 241	
OTHER	64		
TOTAL	66		
CLICK HERE FOR HEALTH ASSESSMENT DATA			